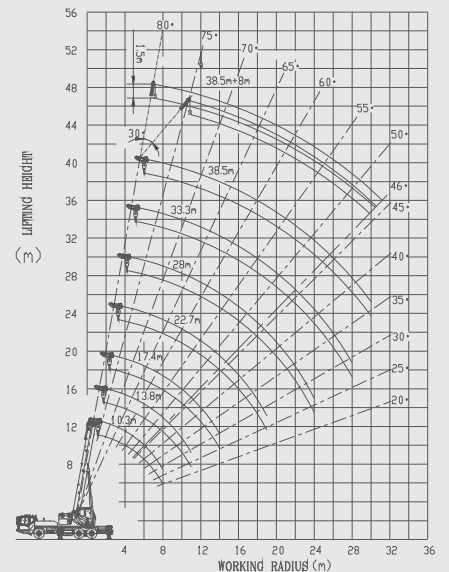
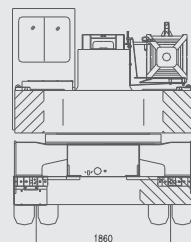
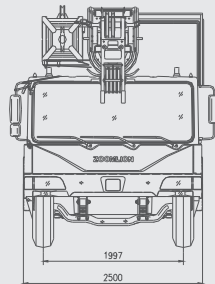
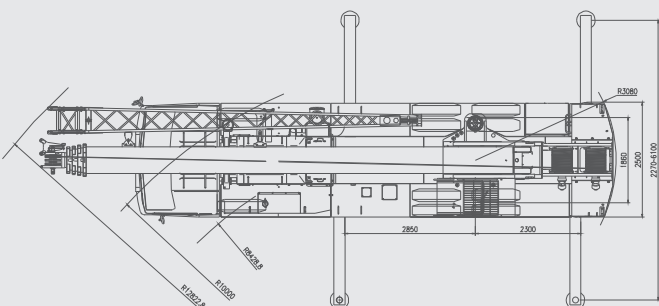
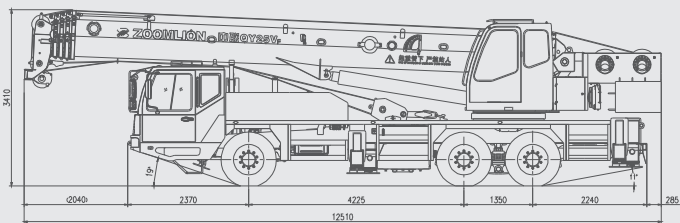


NEW ERA
NEW IMAGE

QY25VF531.3T Truck Crane



The Power of China, The legend of world.

ZOOMLION

VISION CREATES FUTURE

QY25V_F531.3T TRUCK CRANE

CRANE

Description: Truck crane with maximum lifting capacity 25 ton
Model: QY25V_F531.3T

• Specification

Boom length: 10.3m-38.5m, Jib length: 8m

Items	Values	
Maximum	10.3m boom	15400kg at 5.5m(Parts of line:8)
	13.8m boom	17200kg at 5m(Parts of line:8)
	17.4m boom	15600kg at 5m(Parts of line:7)
	22.7m boom	10000kg at 7m(Parts of line:5)
	28m boom	7800kg at 8m(Parts of line:4)
	33.3m boom	6000kg at 9m(Parts of line:3)
Hoisting	Main winch	130m/min
	Aux. winch	100m/min
Hoisting	Main winch	16.2m/min(Parts of line:8)
	Aux. winch	100m/min(Parts of line:1)
Boom derricking angle	-2°—80°	
Boom derrick time	-2°—80°/45s	
Boom extending time	10.3m—38.5m/120s	
Boom slewing time	0—2.6r/min	

• Equipment and structure

Items	Structure	
Boom type	Decagon-type, 5-section hydraulically telescopic type(boom sections 3, 4 and 5 simultaneously operated)	
Jib type	Offset angles: 0° , 30°	
Boom extension/retraction type	Two hydraulic cylinders and wire ropes used together	
Boom derricking/retraction equipment	One hydraulic cylinder of direct acting type	
Winch system (Main & Aux. winches)	Driven by axial plunger type hoisting motor through planetary gear reduction. Controlled independently by operating lever. Equipped with normally closed brake.	
Slewing equipment	Ball bearing type	
Wire rope for hoisting	Main winch	Diameter: ϕ 14mm \times length: 160m
	Aux. winch	Diameter: ϕ 14mm \times length: 100m
Outriggers	Type	Hydraulic H-beam type
	Extension width	6100mm(Fully extended) 4200mm(Intermediately extended) 2270mm(Fully retracted)

• Hydraulic equipment

Items	Structure	
Oil pump	Triple gear pump type	
Hydraulic motor	Hoisting motor	Axial plunger type
	Slewing motor	Axial plunger type
Control valve	3 position 4 way valve	
Cylinder	Double acting type	
Oil reservoir capacity	500 L	

• Safety device

Automatic LMI, boom angle indicator, anti-2-block switch, safety trap, 3rd wrap, the 5th outrigger overpressure warning device, double acting hydraulic lock, relief valve

• Standard equipment

Outrigger, jib, rooster sheave, independent two winches control system, hooks (20 ton, 3 ton), hydraulic oil cooler, 2 working lights, LMI with voice alarm, toolbox

• Optional equipment

CHASSIS

Model: ZLJ5323

• Specification

Boom length: 0.3m-38.5m, Jib length: 8m

Items	Values
Maximum driving speed	72km/h
Gradeability	34% (theoretical value)
Minimum turning radius	10m

• General dimensions & G.V.W.

Items	Values	
Overall length	12510mm	
Overall width	2500mm	
Overall height	3410mm	
Wheel base	4225mm + 1350mm	
Treads	Front	1997mm
	Rear	1830mm
Gross machine weight	Gross weight	29400kg
	Front weight	6370kg
	Rear weight	22900kg

• Engine

Items	Structure
Model	WP6.240
Type	6-inline, supercharged and intercooled, diesel
Piston displacement	6.750 L
Max. power	176 kW /2300 r/min
Max. torque	900 N.m /1400 - 1600 r/min

• Equipment and structure

Items	Structure	
Drive system	6 \times 4	
Clutch	Single dry plate, hydraulic control with air booster	
Transmission	Manual transmission type	
Number of speeds	6 forward & 1 reverse speed	
Axles	Front	Steer
	Rear	Drive
Suspension	Front	Leaf springs with shock absorber
	Rear	Equalizer beams & torque rods with leaf spring
Brake	Service	2 circuit air brake, acting on all wheels
	Parking	Spring loaded brake
	Auxiliary	Exhaust brake
Steering	Ball nut type with hydraulic power booster	
Tire size	Front	11.00R20-18PR
	Rear	11.00R20-18PR
Fuel tank capacity	250 L	
Seating capacity	2 persons	
Battery	(12V-N200) at2	

• Standard equipment

Towing hook (front and rear), spare tire & wheel, air dryer, radio, cigar lighter, ashtray, cab heater, cab cooler

• Stow the hooks in place before driving.

• Before you use this machine, read the precautions in the instruction manual thoroughly to operate it correctly.

• ZOOMLION products and specifications are subject to improvements and changes without notice.

www.zoomlion.com

QY25VF531.3T TRUCK CRANE

Unidad: kg

Radio (m)	Pluma (m)														Angulo Pluma (°)	Pluma+Jib 39+8(m)			
	Area Frontal (con 5º estabilizador), costado y atrás							Area frontal (sin 5º estabilizador)								Angulo Montaje 0º Lado, atrás		Angulo Montaje 0º Frente	
	10,20	13,80	17,40	22,80	28,20	33,60	39,00	10,20	13,80	17,40	22,80	28,20	33,60	39,00					
3,0	25000	23000	19000					25000	23000	19000									
3,5	25000	23000	19000					25000	23000	19000									
4,0	24500	22000	18000	14000				24500	22000	18000	14000				80	3000	3000	1500	1500
4,5	22000	20500	17000	13000				22000	20500	17000	13000				78	3000	3000	1500	1500
5,0	20000	19000	15700	12000	10000			20000	19000	15700	12000	10000			76	2900	2900	1500	1500
5,5	18000	17700	14700	11500	9500			18000	17700	14700	11500	9500			74	2800	2750	1500	1500
6,0	16000	16000	13700	10900	9000			15800	15500	13700	10900	9000			72	2700	2250	1450	1450
6,5	14200	14000	12800	10400	8500	7000		13000	12600	12100	10400	8500	7000		70	2550	1800	1400	1400
7,0	12900	12700	12000	9800	8000	6800		10900	10500	10100	9800	8000	6800		68	2300	1450	1350	1200
8,0	11000	10900	10300	8800	7600	6300	5200	7800	7600	7300	8100	4600	6300	5200	66	2050	1150	1300	980
9,0		9000	8800	8000	6800	5800	5000		5700	5400	6200	6700	5800	5000	64	1850	900	1270	760
10,0		7400	7250	7300	6200	5300	4800		4300	4100	4800	5300	5300	4800	62	1650	660	1240	580
11,0		6200	6050	6600	5700	4900	4500		3300	3100	3800	4300	4700	4500	60	1400	450	1210	380
12,0			5000	5600	5250	4500	4150			2300	3050	3400	3800	4000	58	1200		1080	
13,0			4150	4800	4900	4200	3850			1700	2450	2800	3200	3400	56	1030		930	
14,0			3500	4150	4500	3950	3580			1200	1950	2300	2650	2850	54	870		800	
15,0				3600	3950	3700	3350				1500	1850	2200	2400	52	730		650	
16,0				3050	3450	3500	3150				1200	1550	1800	2000	50	600		530	
18,0				2280	2650	2900	2750				600	950	1200	1450	45	320			
20,0					2050	2250	2400					500	800	1000	40				
22,0					1550	1800	1950						450	650	35				
24,0					1160	1400	1500								30				
26,0						1060	1200												
28,0						780	950												
30,0							700												
32,0							500												